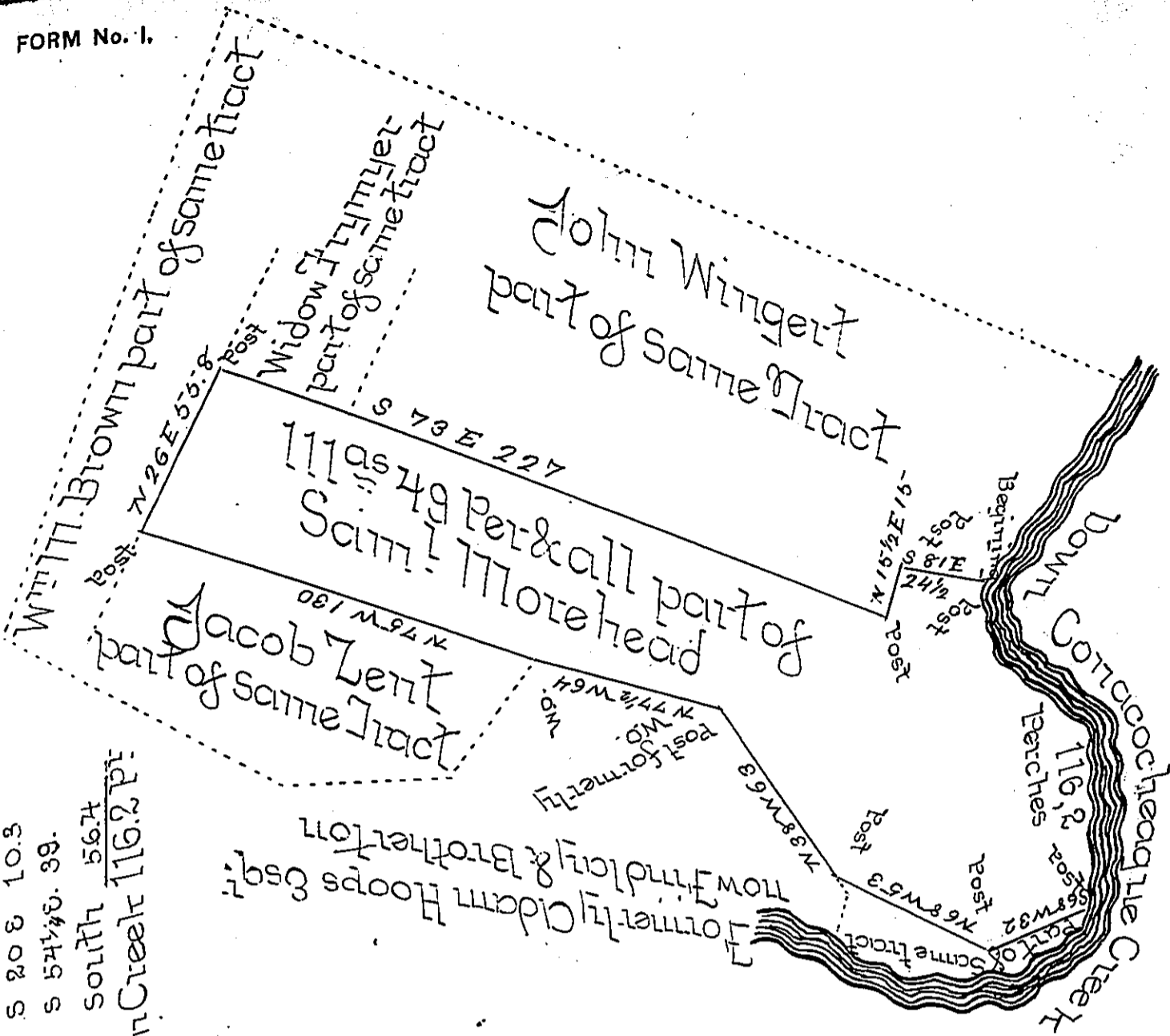


Courses of Creek  
 S. 5° 5' 10.5  
 S 20° 8' 10.3  
 S 54 1/2° 5' 38.  
 South 56.74  
 Down Creek 116.2 p<sup>ts</sup>



Draft of part of a tract of land situate in Hamilton Township Franklin County (formerly Lancaster County) containing one hundred and eleven acres forty nine perches & allowance of six per cent for Roads &c. Being part of a larger tract of 327 as & all. Which was surveyed in pursuance of a Warrant granted Samuel Morehead Dated the 25<sup>th</sup> of August 1735 surveyed and laid off the above part the 5<sup>th</sup> of May 1737 for Jacob Newman

William Hamilton D.S.

To Gabriel Hiester Esq;  
 Sur<sup>or</sup> Gen<sup>l</sup> -

IN TESTIMONY that the above is a copy of the original remaining on file in the Department of Internal Affairs of Pennsylvania, made conformably to an Act of Assembly approved the 16th day of February, 1833, I have hereunto set my Hand and caused the Seal of said Department to be affixed at Harrisburg, this fourth day of April 1899.

*Jameau Latta*  
 Secretary of Internal Affairs.